



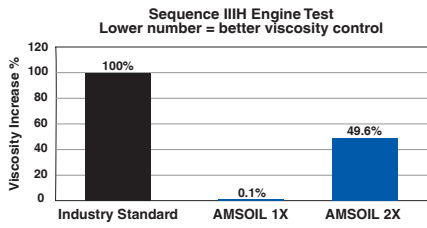
*The First in Synthetics*®



**PRODUCT CATALOG**



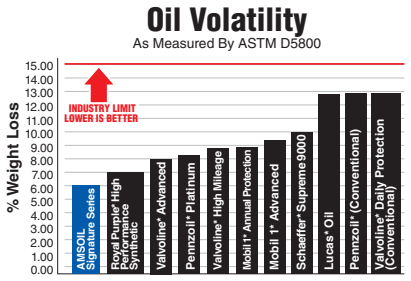
# WHY BUY SIGNATURE SERIES?



## SIGNATURE SERIES RESISTS VISCOSITY INCREASE

AMSOIL is barely challenged by the industry-standard testing, demonstrating only a 0.1% viscosity increase. Even when the test length is doubled, AMSOIL delivered **twice the viscosity control** required by the standard.<sup>6G</sup>

<sup>6G</sup>Based on independent testing of AMSOIL Signature Series 5W-30 in the Sequence IIH Engine Test (ASTM D8111), required by the ILSAC GF-6 and API SP specifications.



## SIGNATURE SERIES HELPS KEEP VALVES CLEAN

AMSOIL fights volatility<sup>U</sup> **38% better** than Mobil 1 and **17% better** than Royal Purple, helping reduce oil consumption and keep valves clean.

<sup>U</sup>Based on independent testing of AMSOIL Signature Series Synthetic 5W-20, Mobil 1 Advanced Synthetic 5W-20, Royal Purple High Performance Synthetic 5W-20 in ASTM D5800. Oils purchased Oct.-Nov. 2018.

## SIGNATURE SERIES HELPS KEEP ENGINES CLEANER

AMSOIL Signature Series is fortified with a heavy treatment of detergent additives, delivering **28 percent more acid-neutralizing power than Mobil 1\*** and helping engines stay cleaner, longer.<sup>L</sup>

<sup>L</sup>Based on independent testing of Mobil 1 Annual Protection Full Synthetic 5W-30 and AMSOIL Signature Series 5W-30 in ASTM D2896. Oils purchased July 2020.

## SIGNATURE SERIES PROTECTS AGAINST LSPI

AMSOIL Synthetic Motor Oils achieved **100% protection** against LSPI.<sup>B</sup>

<sup>B</sup>Based on zero LSPI events in five consecutive tests of AMSOIL Signature Series, XL and OE 5W-30 Motor Oil in the LSPI engine test required by the GM dexos1 Gen 2 specification.

## SIGNATURE SERIES GUARDS TURBOS

Protects turbochargers **72% better** than required<sup>c</sup> by the GM dexos1<sup>®</sup> Gen 2 specification.

<sup>c</sup>Based on independent testing of AMSOIL Signature Series 5W-30 in the GM turbo coking test.

## SIGNATURE SERIES CLEANS

AMSOIL Signature Series Synthetic Motor Oil has **50% more** detergents<sup>D</sup> to help keep oil passages clean and promote oil circulation. It provides **90% better protection** against sludge.<sup>DD</sup>

<sup>DD</sup>vs. AMSOIL OE Motor Oil<sup>DD</sup> Based on independent testing of AMSOIL Signature Series 5W-30 in the ASTM D6593 engine test for oil screen plugging as required by the API SN specification.



## Signature Series Synthetic Motor Oil

Engineered for enthusiasts seeking maximum protection and performance. Precision-formulated with cutting-edge technology and a longstanding devotion to making the world's best motor oil. The result: engine protection that blows the doors off the highest industry standards. Guaranteed protection for up to 25,000 miles (40,200 km) or 1 year, whichever comes first. Provides 75% more engine protection against horsepower loss and wear.<sup>A</sup>

### ● 0W-20 (ASM)

Use in vehicles that require API SP (Resource Conserving), SN PLUS, SN... • ILSAC GF-6A, 5, 4... • GM dexos1<sup>®</sup> Gen 3 (supersedes dexos1 Gen 2, 6094M) • ACEA A1/B1 • Chrysler MS-6395 • Ford WSS-M2C947-A, WSS-M2C947-B1, WSS-M2C962-A1

### ● 5W-20 (ALM)

Use in vehicles that require API SP (Resource Conserving), SN PLUS, SN... • ILSAC GF-6A, 5, 4... • GM dexos1<sup>®</sup> Gen 3 (supersedes dexos1 Gen 2, 6094M) • ACEA A1/B1 • Chrysler MS-6395 • Ford WSS-M2C945-A, WSS-M2C930-A, WSS-M2C945-B1, WSS-M2C960-A1

### ● 0W-30 (AZO)

Use in vehicles that require API SP (Resource Conserving), SN PLUS, SN... • ILSAC GF-6A, 5, 4... • GM dexos1<sup>®</sup> Gen 3 (supersedes dexos1 Gen 2, LL-A-025, 6094M, 4718M) • ACEA A5/B5, A1/B1 • Chrysler MS-6395 • Ford WSS-M2C963-A1

### ● 5W-30 (ASL)

Use in vehicles that require API SP (Resource Conserving), SN PLUS, SN... • ILSAC GF-6A, 5, 4... • GM dexos1<sup>®</sup> Gen 3 (supersedes dexos1 Gen 2, LL-A-025, 6094M, 4718M) • ACEA A5/B5, A1/B1 • Chrysler MS-6395 • Honda HTO-06 • Ford WSS-M2C946-A, WSS-M2C929-A, WSS-M2C946-B1, WSS-M2C691-A1

### ● 10W-30 (ATM)

Use in vehicles that require API SP (Resource Conserving), SN PLUS, SN... • ILSAC GF-6A, 5, 4... • ACEA A5/B5, A1/B1 • Chrysler MS-6395 • Ford WSS-M2C205-A • GM LL-A-025, 6094M, 4718M

### ● 0W-40 (AZF)

Use in vehicles that require API SP, SN PLUS, SN... • Chrysler MS-12633, MS-10725, MS-10850; Nissan GT-R<sup>®</sup>

### ○ 5W-50 (AMR)

Use in vehicles that require API SP, SN PLUS, SN... • Ford WSS-M2C931-C (Mustang)

<sup>A</sup>Based on independent testing of AMSOIL Signature Series 0W-20 using the ASTM D6891 standard test.



## XL Synthetic Motor Oil

For enthusiasts who want to do something extra for their vehicle. Engineered for advanced automotive technology, including turbos and direct injection. Boosted formulation delivers more cleaning power and promotes longer engine life. **Provides 64% more protection against oil breakdown<sup>F</sup> than required by the GM dexos1<sup>®</sup> Gen 2 specification.** Extra protection that lasts up to 12,000 miles (19,300 km) or 1 year, whichever comes first.

### ● 0W-20 (XLZ)

Use in vehicles that require API SP (Resource Conserving), SN PLUS, SN... • ILSAC GF-6A, 5, 4... • GM dexos1<sup>®</sup> Gen 3 (supersedes dexos1 Gen 2, 6094M) • ACEA A1/B1 • Chrysler MS-6395 • Ford WSS-M2C947-A, WSS-M2C947-B1, WSS-M2C962-A1

### ● 5W-20 (XLM)

Use in vehicles that require API SP (Resource Conserving), SN PLUS, SN... • ILSAC GF-6A, 5, 4... • GM dexos1<sup>®</sup> Gen 3 (supersedes dexos1 Gen 2, 6094M) • ACEA A1/B1 • Chrysler MS-6395 • Ford WSS-M2C945-A, WSS-M2C930-A, WSS-M2C945-B1, WSS-M2C960-A1

### ● 5W-30 (XLF)

Use in vehicles that require API SP (Resource Conserving), SN PLUS, SN... • ILSAC GF-6A, 5, 4... • GM dexos1<sup>®</sup> Gen 3 (supersedes dexos1 Gen 2, LL-A-025, 6094M, 4718M) • ACEA A5/B5, A1/B1 • Chrysler MS-6395 • Honda HTO-06 • Ford WSS-M2C946-A, WSS-M2C929-A, WSS-M2C946-B1, WSS-M2C691-A1

### ● 10W-30 (XLT)

Use in vehicles that require API SP (Resource Conserving), SN PLUS, SN... • ILSAC GF-6A, 5, 4... • ACEA A5/B5, A1/B1 • Chrysler MS-6395 • Ford WSS-M2C205-A • GM 6094M, 4718M

### ○ 10W-40 (XLO)

Use in vehicles that require API SP, SN PLUS, SN... • ACEA A3/B3, A3/B4\*



## OE Synthetic Motor Oil

Delivers 100% synthetic engine protection for advanced automotive technology, including turbos and direct injection. **Provides 47% more wear protection.<sup>G</sup>** Specifically formulated for the longer drain intervals recommended by original equipment (OE) manufacturers.

### ● 0W-16 (OES)

Use in vehicles that require API SP (Resource Conserving), SN PLUS, SN... • ILSAC GF-6B

### ● 0W-20 (OEZ)

Use in vehicles that require API SP (Resource Conserving), SN PLUS, SN... • ILSAC GF-6A, 5, 4... • GM dexos1<sup>®</sup> Gen 3 (supersedes dexos1 Gen 2, 6094M) • ACEA A1/B1 • Chrysler MS-6395 • Ford WSS-M2C947-A, WSS-M2C947-B1, WSS-M2C962-A1

### ● 5W-20 (OEM)

Use in vehicles that require API SP (Resource Conserving), SN PLUS, SN... • ILSAC GF-6A, 5, 4... • GM dexos1<sup>®</sup> Gen 3 (supersedes dexos1 Gen 2, 6094M) • ACEA A1/B1 • Chrysler MS-6395 • Ford WSS-M2C945-A, WSS-M2C930-A, WSS-M2C945-B1, WSS-M2C960-A1

### ● 5W-30 (OEF)

Use in vehicles that require API SP (Resource Conserving), SN PLUS, SN... • ILSAC GF-6A, 5, 4... • GM dexos1<sup>®</sup> Gen 3 (supersedes dexos1 Gen 2, LL-A-025, 6094M, 4718M) • ACEA A5/B5, A1/B1 • Chrysler MS-6395 • Honda HTO-06 • Ford WSS-M2C946-A, WSS-M2C929-A, WSS-M2C946-B1, WSS-M2C691-A1

### ● 10W-30 (OET)

Use in vehicles that require API SP (Resource Conserving), SN PLUS, SN... • ILSAC GF-6A, 5, 4... • ACEA A5/B5, A1/B1 • Chrysler MS-6395 • Ford WSS-M2C205-A • GM 6094M, 4718M

### Tough-to-reach fill hole?

Order a flexible pour spout with your oil to make the job easier. Fits quarts and gallons.



<sup>F</sup>Based on independent testing of AMSOIL XL 5W-30 motor oil in the GMOD engine test required for the GM dexos1 Gen2 specification. <sup>G</sup>Based on independent testing of OE 0W-20 in the Peugeot TU3M Wear Test as required by the dexos1 Gen 2 specification.



# BUILD IT.



## ● Assembly Lube (EAL)

Formulated to cling to engine parts and provide exceptional wear protection in newly built or rebuilt high-performance, racing and other four-stroke engines.

## ● Break-In Oil (BRK)

Allows for quick and efficient piston ring seating in new and rebuilt high-performance and racing engines.

# CRUISE IT.



## Z-ROD® Synthetic Motor Oil

High-zinc, high-phosphorus formulation engineered specifically for classic cars and performance vehicles.

- **10W-30 (ZRT)**  
Use in vehicles that require API SL, SJ...
- **10W-40 (ZRD)**  
Use in vehicles that require API SL, SJ...
- **20W-50 (ZRF)**  
Use in vehicles that require API SL, SJ...

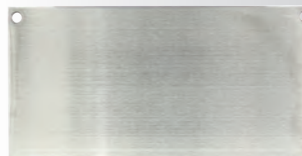
## AMSOIL DELIVERS SUPERIOR RUST PROTECTION

In industry-standard testing, AMSOIL Z-ROD® completely prevented rust formation while a leading competitor did not.<sup>11</sup>

Competing Brand



AMSOIL



<sup>11</sup>Based upon in-house testing of AMSOIL Z-ROD 10W-40 and a leading competitor obtained on 7/25/2019 in ASTM D1748-10.

# RACE IT.



## DOMINATOR® Synthetic Racing Oil

Superior performance and maximum protection in high-performance and racing applications.

- **5W-20 (RD20)**
- **15W-50 (RD50)**
- **10W-30 (RD30)**
- **SAE 60 (RD60)**

DCO



## ● 20W-50 Synthetic Competition Diesel Oil (DCO)

Delivers 50% more film thickness<sup>9</sup> to withstand high cylinder pressures and protect against wear.

<sup>9</sup>Compared to the 3.5 cP HTHS limit for SAE 15W-40.



## PRODUCTS THE PROS USE

"AMSOIL products are the best on the market and definitely give us an added performance factor."

**BRYCE MENZIES**  
Professional Off-Road Driver



## Premium Protection Synthetic Motor Oil

Ideal for gasoline engines and pre-2007 diesel applications not equipped with diesel particulate filters (DPFs), where the extra protection of a high-zinc formula is desired.

### 10W-40 (AMO)

Use in vehicles that require API CI-4+/SL... • ISO-L-EMA • Caterpillar ECF-1 • JASO MA (Motorcycle) • MAN 271/3275 • MTU Type 2 • Cummins 20071/20072/20076/20077 • Volvo VDS-2, VDS • Mack EO-M+ • ACEA A3/B3/ E3/ E5 • MB 228.1, 228.3, 229.1 • Detroit Diesel 93K214

### 20W-50 (ARO)

Use in vehicles that require API CI-4+/SL... • ISO-L-EMA • Caterpillar ECF-1 • JASO MA (Motorcycle) • MAN 271/3275 • MTU Type 2 • Cummins 20071/20072/20076/20077 • Volvo VDS-2, VDS • Mack EO-M+ • ACEA A3/B3/ E3/ E5 • MB 228.1, 228.3, 229.1 • Detroit Diesel 93K214



# PREMIUM PROTECTION FOR EUROPEAN VEHICLES

## Emissions System Protection

AMSOIL Synthetic European Motor Oil features precisely balanced formulations that consider the needs of modern exhaust treatment devices. It is important to use an oil that meets the proper specification to ensure optimum engine protection and performance.

## Synthetic European Motor Oil

Specially formulated for the lubrication needs of European gasoline and diesel cars and light trucks.

- **Outstanding** All-Season Performance
- **Engineered** for Maximum Fuel Economy
- **Enhanced** Turbocharger Protection

# EUROPEAN MOTOR OIL

### 0W-20 LS-VW Synthetic European Motor Oil (EZT)

Use in vehicles that require API SN-PLUS, SN... • ACEA C5 • VW 508.00/509.00/TL52577 • Porsche C20

### 0W-20 LS Synthetic European Motor Oil (AFE)

Use in vehicles that require API SN-PLUS (Resource Conserving), SN, SM... • ILSAC GF-5 • ACEA C5 • A1/B1 • BMW LL-17FE+ • MB 229.71 • Ford WSS-M2C947-B1 • Opel/Vauxhall OV0401547 • Fiat 9.55535-GSX • Chrysler MS-12145 • Volvo VCC RBS0-2AE

### 5W-30 LS Synthetic European Motor Oil (AEL)

Manufacturer Approvals: VW 504.00/507.00  
Use in vehicles that require API SN • ACEA C3 • GM dexos2™ • Chrysler MS-11106 • MB 229.51 • BMW LL-04 • Porsche C30

### 5W-40 MS Synthetic European Motor Oil (AFL)

Manufacturer Approvals: MB-Approval 229.51 • Porsche A40  
Use in vehicles that require ACEA C3 • API SN/SM/CF... • BMW Longlife-04 • Chrysler MS-10850 (supersedes MS-10896) • Ford WSS-M2C917-A • GM dexos2™ (supersedes LL-A-025 and LL-B-025) • Renault RN0700/RN0710 • Audi/Volkswagen 502.00/505.01

### 0W-40 FS Synthetic European Motor Oil (EFO)

Use in vehicles that require ACEA A3/B3, A3/B4 • API SN/SM... • BMW LL-01 • MB 229.1, 229.3, 229.5 • Porsche A40 • Renault 0710, 0700 • Audi/Volkswagen 502.00/505.00

### 5W-40 FS Synthetic European Motor Oil (EFM)

Manufacturer Approvals: MB-Approval 229.5 • Porsche A40 • VW/Audi 502.00/505.00  
Use in vehicles that require ACEA A3/B3, A3/B4 • API SN/SM... • BMW LL-01 • Renault 0710, 0700



# WHY BUY AMSOIL SYNTHETIC DIESEL OIL?

Competing Brand



Severely Scuffed Liner

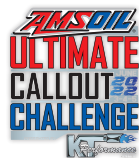



Non-Scuffed Liner

**AMSOIL FIGHTS WEAR**

AMSOIL delivers **powerful engine protection**. How good is it? In independent testing compared to a leading brand, AMSOIL Signature Series Diesel Oil provided long-lasting wear protection, **keeping cylinder liners looking like new.**<sup>DD</sup>

<sup>DD</sup>Based on third-party testing of AMSOIL 5W-30 Signature Series Max-Duty Synthetic Diesel Oil and a leading conventional 15W-40 diesel oil using the Detroit Diesel® DD13 Scuffing test for specification DFS 93K222. \*All trademarked names and images are the property of their respective owners and may be registered marks in some countries. No affiliation or endorsement claim, express or implied, is made by their use.



## SIGNATURE SERIES MAX-DUTY SYNTHETIC DIESEL OIL

The top tier of AMSOIL protection and performance for diesel engines. Provides 6X more engine protection.<sup>1</sup> Delivers up to 60% better turbo cleanliness<sup>J</sup> and withstands the extra demands you place on the turbo when pulling heavy loads or updating the tune for maximum horsepower. Provides up to 76% less oil consumption than required by the API CK-4 standard in the Caterpillar-1N oil consumption test. Provides up to 2X better rust protection.<sup>K</sup>

### ● 5W-30 (DHD)

Use in vehicles that require API CK-4/SN+, CJ-4... • ACEA E9, E7, E6 • Mack EOS-4.5, EO-O • Detroit Diesel DFS 93K222, DDC 93K218, 93K215, 93K214 • Caterpillar ECF-3, ECF-2, ECF-1-a • Cummins CES20086, CES20081 • Volvo VDS-4.5, VDS-4, VDS-3 • MB 228.51, 228.31 • MTU Type 3.1, 2.1, II, I • MAN 3677, 3575 • JASO DH-2 • Renault RLD-4, RLD-3 • Deutz DQC IV-10 LA, DQC III-10 LA • Scania LA-2 • Chrysler MS 10902 • Ford WSS-M2C214-B1

### ● 10W-30 (DTT)

Use in vehicles that require API CK-4/SN, CJ-4, CI-4+, CF • Volvo VDS4.5, VDS4, VDS3 • Mack EOS-4.5, EO-O • Renault RLD-4, RLD-3 • Cummins CES20086, CES20081 • Caterpillar ECF-3, ECF-2, ECF-1-a • DDC 93K218, 93K215, 93K214 • DFS 93K222 • ACEA E9, E7 • MB 228.31 • MAN 3575 • MTU Type 2.1, II, I • JASO DH-2 • Deutz DQC III-10 LA • Ford WSS-M2C171-F1 • Chrysler MS 10902

### ● 0W-40 (DZF)

Delivers 4X better cold-temperature performance<sup>EE</sup>

Use in vehicles that require API CK-4/SN, CJ-4... • ACEA E9, E7 • Mack EOS-4.5, EO-O • Detroit Diesel DDC 93K218, 93K215, 93K214 • Caterpillar ECF-3, ECF-2, ECF-1-a • Cummins CES20086, CES20081 • Volvo VDS-4.5, VDS-4, VDS-3 • MTU Type 2.1, II, I • MAN 3575 • JASO DH-2 • Renault RLD-4, RLD-3 • Deutz DQC III-10 LA • Chrysler MS 10902 • Ford WSS-M2C171-F1

### ● 5W-40 (DEO)

Use in vehicles that require API CK-4/SN, CJ-4... • ACEA E9, E7 • Mack EOS-4.5, EO-O • Detroit Diesel DFS 93K222, DDC 93K218, 93K215, 93K214 • Caterpillar ECF-3, ECF-2, ECF-1-a • Cummins CES20086, CES20081 • Volvo VDS-4.5, VDS-4, VDS-3 • MB 228.31 • MTU Type 2.1, II, I • MAN 3575 • JASO DH-2 • Renault RLD-4, RLD-3 • Deutz DQC III-10 LA • Allison TES-439 • Scania LA-2 • Chrysler MS 10902 • Ford WSS-M2C171-F1

### ● 15W-40 (DME)

Use in vehicles that require API CK-4/SN, CJ-4... • ACEA E9, E7 • Mack EOS-4.5, EO-O • Detroit Diesel DFS 93K222, DDC 93K218, 93K215, 93K214 • Caterpillar ECF-3, ECF-2, ECF-1-a • Cummins CES20086, CES20081 • Volvo VDS-4.5, VDS-4, VDS-3 • MB 228.31 • MTU Type 2.1, II, I • MAN 3575 • JASO DH-2 • Renault RLD-4, RLD-3 • Deutz DQC III-10 LA • Allison TES-439 • Scania LA-2 • Chrysler MS 10902 • Ford WSS-M2C171-F1

<sup>1</sup>than required by the Detroit Diesel DD13 Scuffing Test for Specification DFS 93K222 using 5W-30 as worst-case representation. <sup>2</sup>Based on specification standards of CAT C13 2nd Ring Top Land Carbon testing. <sup>3</sup>Based on industry standard testing using the NMMA FC-W Rust Test. <sup>4E</sup>When compared to SAE 15W-40 in ASTM D5293 Cold Cranking Viscosity Test.





ADO



ADN

## Heavy-Duty Synthetic Diesel Oil

Outstanding protection and performance for customers seeking an upgrade over conventional, synthetic-blend and other synthetic diesel oils. Provides 4X more wear protection.<sup>1</sup>

### ● 10W-30 (ADN)

Use in vehicles that require API CK-4, CJ-4... • ACEA E9, E7 • Mack EOS-4.5, EO-O • Detroit Diesel DFS 93K222, DDC 93K218, 93K215, 93K214 • Caterpillar ECF-3, ECF-2, ECF-1-a • Cummins CES20086, CES20081 • Volvo VDS-4.5, VDS-4, VDS-3 • MB 228.31 • MTU Type 2.1, II, I • MAN 3575 • JASO DH-2 • Renault RLD-4, RLD-3 • Deutz DQC III-10 LA • Ford WSS-M2C171-F1 • Chrysler MS 10902

### ● 5W-40 (ADO)

Use in vehicles that require API CK-4, CJ-4... • ACEA E9, E7 • Mack EOS-4.5, EO-O • Detroit Diesel DFS 93K222, DDC 93K218, 93K215, 93K214 • Caterpillar ECF-3, ECF-2, ECF-1-a • Cummins CES20086, CES20081 • Volvo VDS-4.5, VDS-4, VDS-3 • MB 228.31 • MTU Type 2.1, II, I • MAN 3575 • JASO DH-2 • Renault RLD-4, RLD-3 • Deutz DQC III-10 LA • Allison TES-439 • Chrysler MS 10902 • Ford WSS-M2C171-F1

### ● 15W-40 (ADP)

Use in vehicles that require API CK-4, CJ-4... • ACEA E9, E7 • Mack EOS-4.5, EO-O • Detroit Diesel DFS 93K222, DDC 93K218, 93K215, 93K214 • Caterpillar ECF-3, ECF-2, ECF-1-a • Cummins CES20086, CES20081 • Volvo VDS-4.5, VDS-4, VDS-3 • MB 228.31 • MTU Type 2.1, II, I • MAN 3575 • JASO DH-2 • Renault RLD-4, RLD-3 • Deutz DQC III-10 LA • Allison TES-439 • Chrysler MS 10902 • Ford WSS-M2C171-F1

<sup>1</sup>than required by the Detroit Diesel DD13 Scuffing Test for Specification DFS 93K222 using 10W-30 as worst-case representation.



ADP



DP020

## 100% Synthetic Diesel Oil

Provides outstanding protection, performance and fuel economy for smaller American diesel pickups, vans, cars and SUVs. Delivers up to 6X better wear protection than required by a leading industry standard.<sup>1</sup>

### ● 0W-20

Use in vehicles that require GM dexosD

### ● 5W-30

Use in vehicles that require GM dexosD, dexos2 • Chrysler MS-11106 • Ford WSSM2C214-B1 • ACEA C3

<sup>1</sup>Based on third-party testing in the OM646LA cam wear test using 0W-20 as worst-case representation.



DP530



AME

## ● 15W-40 Synthetic Heavy Duty Diesel and Marine Oil (AME)

Provides outstanding protection for pre-2007 on- and off-road diesel applications not equipped with diesel particulate filters (DPFs).

Use in vehicles that require API CI-4+/SL... • Global DHD-1 • ACEA A3/B3, E2, E3, E5, E7 • JASO DH-1 • Mack EO-M, EO-N • DDC 93K214 • Caterpillar ECF-1-a, ECF-2 • Cummins CES 20076, 20077, 20078 • Volvo VDS-3, VDS-2 • MB 228.1, 228.3, 229.1 • MAN 271, 3275 • MTU Type II

### Like Heavy Duty Diesel and Marine Oil?

Try Signature Series Max-Duty 15W-40 for a serious upgrade. See page 6.

## Oil Analysis

AMSOIL offers oil analysis service options from Oil Analyzers Inc. By analyzing used engine oil, a qualified lab can detect mechanical problems your equipment may have developed. For more information, visit [www.oiltesting.com](http://www.oiltesting.com).

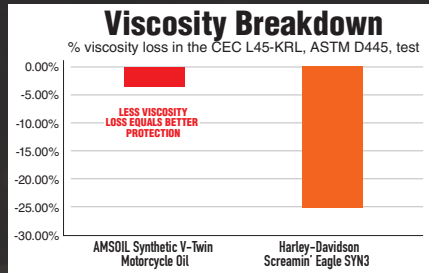
# Oil Analyzers INC.



Oil Suction Pump (G1206)

## AMSOIL Resists Viscosity Breakdown

AMSOIL resists viscosity breakdown **6X better** than Harley-Davidson\* SYN3\* for improved protection against compensator and transmission gear wear.<sup>BB</sup>



<sup>BB</sup>Based on testing of AMSOIL 20W-50 Synthetic V-Twin Motorcycle Oil purchased on 3/19/19 and Harley-Davidson Screamin' Eagle SYN3 purchased on 3/19/19 in the CEC L45-KRL, ASTM D445 test. \*All trademarked names and images are the property of their respective owners and may be registered marks in some countries. No affiliation or endorsement claim, express or implied, is made by their use.

# RIDE HARD. RUN COOL.®



## Synthetic V-Twin Motorcycle Oil



### ○ 20W-50 (MCV)

Use in bikes that require API SG, SL/CF, CG-4 • JASO MA/MA2 • ISO-L-EMA2

Superior synthetic formulation provides long service life and maximum protection against engine wear in Harley-Davidson\*, Buell\*, Ducati\*, Aprilia\*, BMW\* and other motorcycle engines, primaries and transmissions.

### V-Twin Oil Change Kits (HDCK, HDBK, HDMB, HDMC)

Includes everything needed to perform an oil change on most Harley-Davidson motorcycles, including 20W-50 Synthetic V-Twin Motorcycle Oil, AMSOIL Motorcycle Oil Filter and O-ring.

### ● SAE 60 (MCS)

Use in bikes that require API SG, SL/CF, GL-1 • JASO MA/MA2 • ISO-L-EMA2

Superior synthetic formulation provides long service life and maximum protection against engine wear in big-bore, air-cooled motorcycle engines, including Harley-Davidson Panhead, Shovelhead and Knucklehead.

### ● 20W-40 (MVI)

Use in bikes that require API SM • JASO MA • ILSAC GF-4

Superior synthetic formulation provides long service life and maximum protection against engine wear in Indian\* and Victory\* motorcycles.

### ● 15W-60 (MSV)

Use in bikes that require API SM • JASO MA • ILSAC GF-4

Superior synthetic formulation provides long service life and maximum protection against engine wear in Indian and Victory motorcycles.

### ● Synthetic V-Twin Transmission Fluid (MVT)

Helps quiet V-twin transmission noise and enable smooth shifts.

### ● Synthetic V-Twin Primary Fluid (MVP)

Delivers consistent clutch feel and helps riders easily find neutral.





## Synthetic Metric Motorcycle Oil



● **10W-40 (MCF)**

Use in bikes that require API SM, SG, SL, CF • JASO MA/MA2 • ISO-L-EMA2

Superior synthetic formulation provides long service life, smooth shifts and maximum protection against engine wear in Can-Am\*, Honda\*, Yamaha\*, Kawasaki\*, Triumph\*, Suzuki\*, BMW\* and other motorcycle engines.

● **10W-30 (MCT)**

Use in bikes that require API SH, SG, CF • JASO MA/MA2 • ISO-L-EMA2

Superior synthetic formulation provides long service life, smooth shifts and maximum protection against engine wear in Honda, Yamaha, Suzuki and Kawasaki motorcycles.

● **15W-50 (MFF)**

Use in bikes that require API SM • JASO MA/MA2

Superior synthetic formulation provides long service life, smooth shifts and maximum protection against engine wear in Ducati\*, BMW, KTM\*, Yamaha, Triumph and Royal Enfield\* motorcycles.



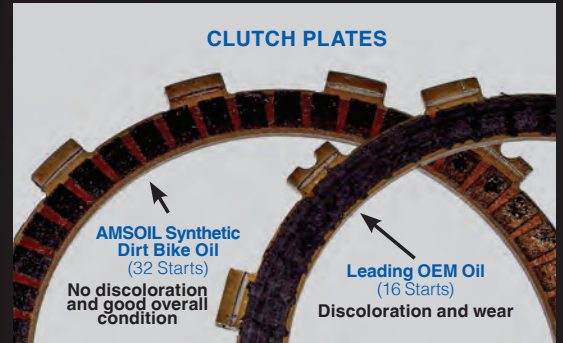


**SWAP**  
**MOTO**  
RACE SERIES



**AMSOIL delivers confident clutch feel.**

AMSOIL provides excellent clutch protection<sup>†</sup>. How good is it? In extreme simulated-start testing, AMSOIL Dirt Bike Oil provided superior wear protection and kept clutch plates looking new.



<sup>†</sup>Based on dyno testing of a Honda CRF450 dirt bike using AMSOIL 10W-40 Synthetic Dirt Bike Oil and a leading original equipment manufacturer 10W-40 conventional dirt bike oil.



**Synthetic Dirt Bike Oil**

Delivers confident clutch feel, maximum horsepower and superior wear protection in all types of four-stroke dirt bikes.

- **10W-40 (DB40)**  
Use in bikes that require JASO MA • API SG, SJ, SH, SL
- **10W-50 (DB50)**  
Use in bikes that require JASO MA • API SG, SJ, SH, SL

- **10W-60 (DB60)**  
Use in bikes that require JASO MA • API SG, SJ, SH, SL
- **Synthetic Dirt Bike Transmission Fluid (DBTF)**  
Use in two-stroke dirt bike transmissions and the Honda CRF.





**King of the Hammers**  
 the ultimate desert race  
 powered by **OPTIMA BATTERIES**



## Synthetic ATV/UTV Motor Oil

Formulated to provide upgraded performance and protection for hard-working and performance ATVs and UTVs.

● **10W-40 (AUV40)**

● **5W-50 (AUV50)**

### ATV/UTV Oil Change Kits

**(PK1, PK2, PK3, CK1, CK2, CK3)**

Contains everything needed to perform an oil change on most Polaris\* (PK) and Can-Am\* (CK) UTVs and ATVs. Call (715) 399-8324 (TECH) (Monday-Friday, 8 a.m. - 5 p.m. Central Time) or contact the AMSOIL Dealer listed on the back of your catalog (if one is listed) to determine the appropriate kit for your application.

### ● Synthetic ATV/UTV Transmission & Differential Fluid (AUPT)

Protects heavily loaded, high-torque ATV and UTV gears and bearings against wear in the most severe operating conditions. Convenient easy-pack helps access tough-to-reach fill holes, making the job faster and cleaner.

### ● Synthetic ATV/UTV Powertrain Fluid (AUPT)

Purpose-built for transmissions/differentials and front drives in Polaris\* ATVs and UTVs, offering the perfect combination of protection and convenience.



WCT



WCF



### Synthetic Marine Engine Oil

Formulated specifically for use in four-stroke gasoline-fueled engines used in marine applications. Certified to meet NMMA FC-W Catalyst Compatible performance specifications.

● **10W-30 (WCT)**

Use in boat motors that require API SM • NMMA FC-W Catalyst Compatible (Registration #FC-00833T) • JASO MA

● **10W-40 (WCF)**

Use in boat motors that require API SM • NMMA FC-W Catalyst Compatible (Registration #FC-00850T) • JASO MA

- Outboard • Inboard • Inboard/Outboard (I/O)
- Personal Watercraft

● **25W-40 (Synthetic Blend) (WCM)**

Use in boat motors that require API SM • NMMA FC-W Catalyst Compatible (Registration #FC-11825T) • JASO MA

WCM



HPM



● **HP Marine™ Synthetic 2-Stroke Oil (HPM)**

Prevents piston skirt scuffing, cylinder bore scuffing and ring sticking in all two-stroke outboard motors, personal watercraft and anywhere NMMA TC-W3 and API-TC oils are specified.

Use in boat motors that require NMMA TC-W3 or API TC.

Pete Maina  
Pro Fisherman







● **Outboard 100:1 Pre-Mix Synthetic 2-Stroke Oil (ATO)**

Contains a heavy dose of low-temperature dispersant additives that excel at reducing varnish and carbon deposit formation in water-cooled outboard motors.

*Use in boat motors that require TC-W3*

● **Universal Synthetic Marine Gear Lube (AGM)**

Resists foam and retains extreme-pressure qualities in outboard lower units, stern drives, V-drives, bow and tunnel thrusters and marine transmissions. Delivers advanced outboard protection against power loss and gear wear, even with up to 15 percent water contamination.<sup>†</sup> Choose the easy-pack for fast, easy installation.

*Use in applications that require GL-5, GL-4*



**OUTSTANDING PROTECTION FOR LOWER UNITS**



**Marine Gear Lube Pump (G3456)**

Specifically designed to ease installation and reduce mess when servicing lower units.



Midwest Fishing Report



[AMSOIL.com/mfr](http://AMSOIL.com/mfr)

<sup>†</sup>Based upon AMSOIL testing of AMSOIL Synthetic Marine Gear Lube 75W-90 in ASTM 3233 and ASTM D892.





### Runs On Freedom®

#### Limited Snowmobile Warranty

Use AMSOIL INTERCEPTOR® Synthetic 2-Stroke Oil exclusively in your current-model-year or newer sled and we'll cover engine repairs in the unlikely event of any engine breakdown for up to two years/5,000 miles.\*

\*To get details and register, visit [AMSOIL.com/rof/warranty](http://AMSOIL.com/rof/warranty).



MAXIMUM PERFORMANCE



### ● DOMINATOR® Synthetic 2-Stroke Racing Oil (TDR)

Delivers outstanding wear protection in high-horsepower and modified racing or trail motors, including snowmobiles, motorcycles, ATVs, personal watercraft, go-carts and outboard motors.

Use in snowmobiles that require API TC

### ● INTERCEPTOR® Synthetic 2-Stroke Oil (AIT)

Prevents piston skirt scuffing, ring sticking and exhaust power valve sticking in two-stroke snowmobiles.

Use in snowmobiles that require API TC

### ● Synthetic 2-Stroke Injector Oil (AIO)

High-quality, cost-effective oil for the severe operating conditions of two-stroke snowmobiles and outboard motors.

Use in snowmobiles and boat motors that require TC-W3 • API TC

### ● SABER® Professional Synthetic 2-Stroke Oil (ATP)

Provides superior protection for handheld two-stroke equipment at any mix ratio up to 100:1, offering the ultimate in convenience.

Use in power equipment that requires ISO-L-EGD • API TC • JASO FD

### ○ Synthetic Chaincase & Gear Oil (TCC)

Superior protection for enclosed chains and gears found in snowmobiles, ATVs, UTVs and general equipment.



MAXIMUM RELIABILITY

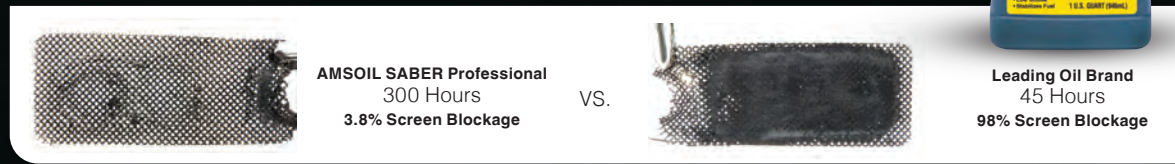


Meets the performance requirements of Polaris®, Arctic Cat® and Ski-Doo® two-stroke snowmobiles.



## SABER Professional Fights Carbon

Equipment using SABER Professional was **96% carbon-free<sup>N</sup>**.



<sup>N</sup>Based on spark-arrestor testing.

## AMSOIL Fights Wear

AMSOIL INTERCEPTOR® Synthetic 2-Stroke Oil delivered **outstanding wear protection and cleanliness** in a rental sled throughout 1,617 miles of abuse.<sup>CC</sup>

AMSOIL kept pistons virtually free of carbon with nearly all coating intact.



AMSOIL fought the formation of carbon deposits, allowing power valves to move freely.



<sup>CC</sup>Based upon use of a new 2019 Polaris® RMK® 850 as a rental sled at Grizzly Lodge December 2018 - February 2019. \*All trademarked names and images are the property of their respective owners and may be registered marks in some countries. No affiliation or endorsement claim, express or implied, is made by their use.



GBS2960



### ● Briggs & Stratton Synthetic 4T Racing Oil (GBS2960)

Formulated by AMSOIL specifically for stock and modified small-displacement air-cooled racing engines and recommended for any four-stroke air-cooled competition engine.

## Synthetic Small-Engine Oil

Helps preserve engine power, reduce oil consumption and reduce maintenance in small engines used in severe service.

**Riding and Push Lawnmowers • Snowblowers • Generators • Pumps • Welders • Skid-Steers • Compressors • and more**

### ○ 5W-30 (AES)

Use in equipment that requires API SL, SJ, SH, SG • API CF, CD • JASO MA/MA2

### ● 10W-30 (ASE)

Use in equipment that requires API SL, SJ, SH, SG • API CF, CD • JASO MA/MA2

### ● 10W-40 (ASF)

Use in equipment that requires API SL, SJ, SH, SG • API CF, CD • JASO MA/MA2

### ● 15W-50 (SEF)

Use in equipment that requires API SL, SJ, SH, SG • API CF, CD • JASO MA/MA2

### ● 20W-50 Zero-Turn Synthetic Hydrostatic Transmission Fluid (AHF)

Fights wear to deliver smooth control and responsive power in zero-turn hydrostatic mowers.

Use in hydrostatic transmissions that require 15W-50 or 20W-50 oil recommended for API SM, SL, SJ, SH or SG.

### ● Formula 4-Stroke® Powersports Synthetic Motor Oil (AFF)

Specially formulated for four-stroke recreational motors, including ATVs and snowmobiles.

Use in ATVs/UTVs and snowmobiles that require API SG, SJ, SL/CF • JASO MA/MA2 • ISO-L-EMA2

### ○ Formula 4-Stroke® Synthetic Scooter Oil (ASO)

Formulated specifically to meet the special needs of today's high-tech air- and water-cooled four-stroke motorized scooters.

Use in scooters that require API SG, SL/CF • JASO MA/MA2 • ISO-L-EMA2

## Shock Therapy® Suspension Fluid

Controls friction, heat, wear, foaming and scuffing in suspension components.

### ● Lightweight #5 (STL)

Use in applications that demand quick rebounds under extreme temperatures.

### ● Medium #10 (STM)

Use in applications that require more dampening and slower rebounds.



## Handle More Heat With Confidence

Standard Severe Service

AMSOIL Severe Service

RESERVE PROTECTION

Change Interval - Miles



## Signature Series Synthetic Automatic Transmission Fluid

Provides reserve protection in fleet vehicles, work trucks and other severe-service applications that quickly break down other lubricants.

### ● Multi-Vehicle (ATF)

Use in applications that require Allison C-4, TES-389 · BMW 7045E, 8072B, LA 2634, LT 71141 · Chrysler ATF-4, Mopar ASRC, 68089195AA, 68049954AA · Ford MERCON, MERCON V, ESP-M2C166-H, FNR5, M2C924-A, XL-12 · GM DEXRON II, DEXRON III, AutoTrak II · Honda/Acura ATF-Z1 · Hyundai/Kia SP-II, SP-III, Red-1 · IDEMITSU K17 · JASO 1A · JWS 3309, 3314, 3317 · MAN 339 Type V-1, 339 Type V-2, 339 Type Z-1, 339 Type Z-2, 339 Type Z-3, 339F · Mazda ATF-M III, ATF-MV, F-1 · Mercedes Benz 236.1, 236.2, 236.3, 236.5, 236.6, 236.7, 236.9, 236.10, 236.11, 236.81, 236.91 · Mitsubishi SP-II, SP-III, ATF-J2 · Nissan Matic-D, Matic-J, Matic-K, 402 · Saab 3309 · Shell 3403, LA 2634 · Subaru ATF, ATF-HP · Suzuki 3314, 3317 · Texaco ETL-7045E, ETL-8072B, N402 · Toyota Type T, T-II, T-III, T-IV · Voith 55.6335, 55.6336 · Volvo 97340, 97341 · VW/Audi G 052 162, G 052 990, G 055 025 · ZF TE-ML 03D, 04D, 05L, 09, 11A, 11B, 14A, 14B, 14C, 16L, 16M, 17C, 20B, 20C, 21L

### ● Fuel-Efficient (ATL)

Engineered to exceed the requirements of original equipment manufacturers (OEMs) specifying low-viscosity oil.

Use in applications that require Aisin-Warner AW-1 · BMW 83 22 0 142 516, 83 22 2 152 426 · Chrysler Mopar 68157995A, 68218925AB, SP-IV · DSIH 6p805 · Ford MERCON LV, SP, ULV · GM DEXRON HP, VI, ULV · Honda/Acura DW-1, Type 3.0 · Hyundai/Kia SP-IV, SPH-IV, SP-IV-RR, NWS-9638, SP4-M · JASO 1A-LV · JWS 3324 · Mercedes Benz 236.12, 236.14, 236.15, 236.41 · Mitsubishi SP-IV, ATF J3, ATF-PA · Nissan Matic-S, Matic-W · Saab 93 165 147 · Shell M-1375.4, M-1375.5, M-1375.6, M-L 12108 · Toyota WS · Volvo 31256774 · VW/Audi G 055 005, G 055 162, G 060 162 · ZF S671 090 255

## OE Synthetic Automatic Transmission Fluid

Resists wear and provides smooth shifts in passenger-car/light-truck transmissions.

### ● Multi-Vehicle (OTF)

Use in applications that require Allison C-4, TES-389 · BMW 7045E, 8072B, LA 2634, LT 71141 · Chrysler ATF-4, Mopar ASRC, 68089195AA, 68049954AA · Ford MERCON, MERCON V, ESP-M2C166-H, FNR5, M2C924-A, XL-12 · GM DEXRON II, DEXRON III, AutoTrak II · Honda/Acura ATF-Z1 · Hyundai/Kia SP-II, SP-III, Red-1 · IDEMITSU K17 · JASO 1A · JWS 3309, 3314, 3317 · MAN 339 Type V-1, 339 Type V-2, 339 Type Z-1, 339 Type Z-2, 339F · Mazda ATF-M III, ATF-MV, F-1 · Mercedes Benz 236.1, 236.2, 236.3, 236.5, 236.6, 236.7, 236.9, 236.10, 236.11, 236.81, 236.91 · Mitsubishi SP-II, SP-III, ATF-J2 · Nissan Matic-D, Matic-J, Matic-K, 402 · Saab 3309 · Shell 3403, LA 2634 · Subaru ATF, ATF-HP · Suzuki 3314, 3317 · Texaco ETL-7045E, ETL-8072B, N402 · Toyota Type T, T-II, T-III, T-IV · Voith 55.6335, 55.6336 · Volvo 97340, 97341 · VW/Audi G 052 162, G 052 990, G 055 025 · ZF TE-ML 03D, 04D, 05L, 09, 11A, 11B, 14A, 14B, 16L, 17C, 20B, 21L

**Note:** AMSOIL warrants the use of this product for Chrysler ATF+4\* applications above -38°F. Product does not meet the cold temperature requirement of ATF+4 at -40°F. For warranty information, visit [www.amsoil.com/warranty.aspx](http://www.amsoil.com/warranty.aspx).

### ● Fuel-Efficient (OTL)

Engineered to exceed the requirements of original equipment manufacturers (OEMs) specifying low-viscosity oil.

Use in applications that require Aisin-Warner AW-1 · BMW 83 22 0 142 516, 83 22 2 152 426 · Chrysler Mopar 68157995A, 68218925AB, SP-IV · DSIH 6p805 · Ford MERCON LV · GM DEXRON VI · Honda/Acura DW-1, Type 3.0 · Hyundai/Kia SP-IV, SPH-IV, SP-IV-RR, NWS-9638, SP4-M · JASO 1A-LV · JWS 3324 · Mercedes Benz 236.12, 236.14, 236.15, 236.41 · Mitsubishi SP-IV, ATF J3, ATF-PA · Nissan Matic-S, Matic-W · Saab 93 165 147 · Shell M-1375.4, M-1375.5, M-1375.6, M-L12108 · Toyota WS · Volvo 31256774 · VW/Audi G 055 005, G 055 162, G 060 162 · ZF S671 090 255

### ● Synthetic CVT Fluid (cvt)

Provides outstanding protection and performance for continuously variable transmissions (CVT) throughout original equipment manufacturer (OEM)-recommended drain intervals.

Use in belt- and chain-type CVTs that require BMW EZL 799A (8322 0 136 376 /8322 0 429 154) · Daihatsu Amix CVTF-DC, CVTF-DFE · FCA Mopar CVTF +4 (Mopar CVT 4) · Ford M2C928-A (CFT 23), WSS-M2C933-A (CFT 30, Motorcraft XT-7-QCFT), MERCON C · GM DEX-CVT, GM CVT (CVTF I-Green2) · Honda HMMF (08200-9006), HCF-2 · Hyundai/Kia SP-CVT 1 · Mazda CVTF 3320 · Mercedes Benz 236.20 (001 989 46 03) · Mitsubishi CVTF-J1, CVTF-J4 · Nissan NS-1, NS-2, NS-3 · Subaru e-CVT, i-CVT F, Lineartronic CV-30, Lineartronic CVTF/CVT-II (K0425Y0710), High Torque CVTF · Suzuki CVT Fluid Green 1, CVT Fluid Green 2 (NS-2), CVTF 3320 (TC) · Toyota/Lexus TC, FE · VW/Audi TL 52180 (G 052 180), TL 52516 (G 052 516)

### ● 100% Synthetic DCT Fluid (dct)

Designed to protect high-tech dual-clutch transmissions during the most intense, high-heat operating conditions.

Use in applications that require BMW 83 22 2 148 578, 83 22 2 148 579, 83 22 0 440 214, 83 22 2 147 477, DCTF-1, MTF-LT-5 · Chrysler 68044345 · Citroen/Peugeot 9734.S2 · Ferrari/Shell TF DCTF-3 · Fiat BOT 341 · Ford WSS-M2C-936-A, WSS-M2C200-D2, XT-11-QDC, XT-14-L · Mercedes Benz 236.21, 236.25 · Mitsubishi Dia-Queen SSTF-1 · Nissan GTR Transmission Oil R35 Special · Pentosin FFL-2, FFL-3, FFL-4 · Porsche 999.917.080.00, 043 207 29, 043 207 30, 000 430 20 · Renault BOT 450 · Volvo 1161838, 1161839 · VW/Audi G 052 182, G 052 529, TL 521 82







MTG

● **Synthetic Manual Transmission and Transaxle Gear Lube (MTG)**

Provides improved internal component protection. Formulated with extreme-pressure additives and advanced frictional qualities that provide smooth shifts while protecting gears, bearings and seals. Non-corrosive to yellow metals.

*Use in applications that require API GL-4 • ZF TE-ML 02B, 17A, MB 235.5 & MAN 341-Z2 (formerly MAN 341 ML) • Synchronized manual transmissions and transaxles that require 75W-85, 75W-90 or 80W-90 API GL-4 Gear Lube • NV 4500 Transmissions • GM Part #12346190 • Chrysler Part #4874459 • Chrysler Spec MS-9070 • Certain Hyundai, Hino, Infiniti, Kia, Lexus, Mazda, Mitsubishi, Nissan, Suzuki, Toyota & Volkswagen models requiring GL-4*

● **Synthetic Synchronmesh Transmission Fluid (MTF)**

Specifically designed to deliver smooth shifts and superior wear protection in manual transmissions and transaxles with synchronizers.

*Use in applications that require New Venture NV T350, NV1500, NV2500, NV3500, NV3550 & NV5600 • Tremec T4, T5, T18, T56, T176, TK0500, TK0600, TR3550 (GM Vehicles) & TR3450 • Honda Genuine MTF • GM Part #12345349, #12345577, #12377916 & #1052931 • Chrysler Part #4874464 & #4874465 • GM Specs #9985648, #9986105 & #9985535 • Chrysler Specs MS-9224 & MS-9417 • MTF-94 & Texaco MTX Fluids*



MTF

● **Super Shift® Racing Transmission Fluid (ART)**

Formulated to prevent slippage and reduce heat in high-performance, high-horsepower vehicles.

*Use in transmissions that require Allison C-4 • Ford Type F*



ART

● **Torque-Drive® Synthetic Heavy-Duty Automatic Transmission Fluid (ATD)**

Premium fluid designed for use in both on- and off-highway heavy-duty equipment.

*Use in transmissions that require Allison C-4, TES-295, TES-389 • Ford MERCON V • GM DEXRON III • Isuzu SCS • MAN 339 Type V-1, 339 Type V-2, 339 Type Z-1, 339 Type Z-2, 339 Type Z-3, 339F • MB 236.91, 236.10 • Voith 55.6335, 55.6336 • Volvo 97340, 97341 • ZF TE-ML 03D, TE-ML 04D, TE-ML 14A, TE-ML 14B, TE-ML 14C, TE-ML 17C, TE-ML 20B, TE-ML 20C*



ATD

● **Synthetic Tractor/Hydraulic Transmission Oil (ATH)**

Formulated for combinations of transmissions, hydraulic systems, final drives, power take-off systems and wet brakes in heavy-duty farm and industrial equipment as well as commercial and residential lawn tractors.

*Use in hydraulic systems that require SAE 5W-30*



ATH







● **SAE 50 Long-Life Synthetic Transmission Oil (FTF)**

Specially formulated for manual transmissions found in high-torque, heavy-duty line-haul trucks and other commercial applications.

Use in transmissions that require Eaton PS-164 Rev. 7 • API GL-1 and MT-1 • Navistar/International TMS 6816 • Mack TO-A Plus • ZF Freedomline • Meritor 0-81 • Rockwell/Eaton/Fuller CD-50 (PS-081)

**Synthetic Powershift Transmission Fluid**

Provides outstanding friction performance for enhanced clutch engagement and superior wear protection for heavy-duty powershift transmissions.

● **SAE 10W (CTG)**

Use in transmissions that require CAT TO-4 • Allison C-4 • Komatsu KES 07.868.1

● **SAE 30 (CTJ)**

Use in transmissions that require CAT TO-4 • Allison C-4 • Komatsu KES 07.868.1

● **SAE 50 (CTL)**

Use in transmissions that require CAT TO-4 • CD-50 • Komatsu KES 07.868.1



**SEVERE GEAR® Synthetic EP Gear Lube**

Specifically engineered for high-demand applications, including trailer towing, heavy hauling, 4x4 off-road driving, commercial use and racing.

● **75W-90 (svg)**

**Top fuel efficiency and cold-temperature performance**

Use in differentials that require API GL-5/MT-1 • MIL-PRF-2105E • MACK GO-J • Dana SHAES 234 (Eaton PS-037)

● **80W-90 (AGL)**

**Excellent extreme-pressure performance and wear protection**

Use in differentials that require API GL-5/MT-1 • MIL-PRF-2105E • MACK GO-J • Dana SHAES 234 (Eaton PS-037)

● **75W-110 (svt)**

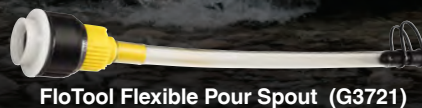
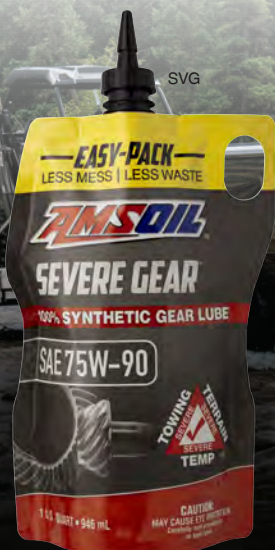
**Extra viscosity protection without sacrificing fuel efficiency**

Use in differentials that require API GL-5/MT-1 • MIL-PRF-2105E • MACK GO-J • Dana SHAES 234 (Eaton PS-037)

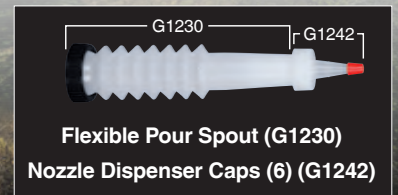
● **75W-140 (svo)**

**Maximum viscosity protection for severe-duty applications**

Use in differentials that require API GL-5/MT-1 • MIL-PRF-2105E • MACK GO-J • Dana SHAES 234 (Eaton PS-037)



FloTool Flexible Pour Spout (G3721)



Flexible Pour Spout (G1230)  
Nozzle Dispenser Caps (6) (G1242)



Gear Lube Hand Pump (G2039)



SRT



### SEVERE GEAR® EP Synthetic Racing Gear Lube

Engineered specifically for the demands of severe racing conditions, including off-road truck racing, rock racing, rock crawling, tractor pulling, funny car racing and dragster racing applications.

● **SAE 250 (SRT)**

*Use in differentials that require API GL-5/MT-1*

FGR



### Long Life Synthetic Gear Lube

Specifically engineered for extended drain intervals up to 500,000 miles (804,672 km) as set by equipment manufacturers for over-the-road trucks and heavy equipment.

● **75W-90 (FGR)**

*Use in differentials that require API GL-5/MT-1 • MIL-PRF-2105E • MACK GO-J+ • Dana SHAES 256 (Eaton PS-163)*

● **80W-140 (FGO)**

*Use in differentials that require API GL-5/MT-1 • MIL-PRF-2105E • MACK GO-J+ • Dana SHAES 256 (Eaton PS-163)*

○ **Slip Lock® Differential Additive (ADA)**

Designed to eliminate gear-housing chatter in cars, trucks and SUVs equipped with limited-slip differentials.

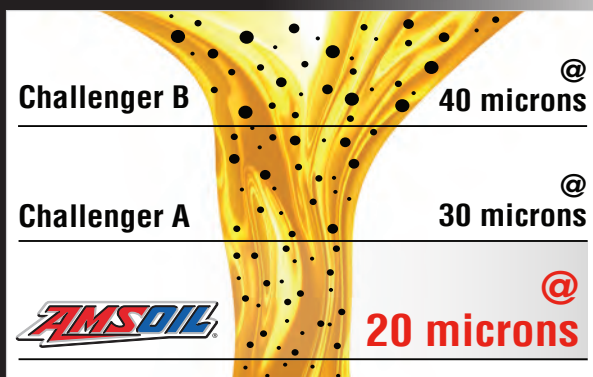
**Note:** AMSOIL synthetic gear lubes do not require the use of this additive. However, not all differentials respond the same and if chatter is noticed, the addition of AMSOIL Slip Lock will eliminate it.

ADA





**99% Efficiency at 20 Microns**  
 Filtering particles >20 microns fights engine wear.<sup>AA</sup>



<sup>AA</sup>In accordance with industry-standard ISO SO 4548-12.

## Oil Filters (EAO/EA15K)

AMSOIL Oil Filters rank among the highest efficiency filters available to the auto/light-truck and powersports markets, providing a filtering efficiency of 99 percent at 20 microns. Featuring advanced full-synthetic technology, AMSOIL Oil Filters provide greater efficiency, capacity and durability than cellulose filters, extending engine and filter life and reducing engine wear.

- Oil Filters designated with product code EA15K are recommended for 15,000 miles (24,140 km)/one year, whichever comes first, in normal or severe service.
- Oil Filters designated with product code EAO are recommended for 25,000 miles (40,234 km)/one year, whichever comes first, in normal service or 15,000 miles (24,140 km)/one year, whichever comes first, in severe service.

**NOTE:** Change oil filter at every oil change.

### Which filter do I need?

Call 1-800-956-5695 (Monday-Friday, 7 a.m. - 7 p.m. Central Time) or contact the AMSOIL Dealer listed on the back of your catalog (if one is listed) to determine the appropriate filter for each application. When AMSOIL Oil Filters are used with a motor oil other than AMSOIL motor oil the filter should be changed according to the vehicle manufacturer recommendation.



### More Premium Filters

AMSOIL offers a variety of specialty oil filters constructed with premium synthetic technology. Call (715) 399-8324 (TECH) (Monday-Friday, 8 a.m. - 5 p.m. Central Time) for application information.

EAHD



### Heavy-Duty Extended-Life Oil Filters (EAHD)

Provide excellent 99 percent filtering efficiency at 20 microns and high contaminant capacity for heavy-duty on- and off-road diesel and gasoline applications. Provide extended service intervals that coincide with the maximum drain intervals of AMSOIL synthetic engine oils.

EABP



### Bypass Filters (EABP90, EABP100, EABP110, EABP120)

High-efficiency bypass filters effectively remove minute dirt particles and soot.

BMK21



### Single-Remote Bypass Systems (BMK21, BMK31, BMK32, BMK33, BMK34)

Working in conjunction with the engine's full-flow oil filter, the AMSOIL Bypass Filter operates by filtering oil on a "partial-flow" basis, effectively reducing engine wear.

BMK22



### DUAL-GARD® Bypass System (BMK22)

Links two AMSOIL Bypass Filter elements together for engines with sump capacities over 15 quarts. Allows fast and simple servicing with spin-on elements.



### Dual Remote Bypass Systems (BMK23, BMK26, BMK27, BMK28)

Versatile system combines full-flow and bypass oil filtration on a single, easy-to-install mount.

BMK30



### Heavy-Duty Bypass System (BMK30)

Maximum filtration performance for virtually all heavy-duty diesel applications, including Class 6, 7 and 8 heavy-duty trucks, off-road equipment, buses, generators, marine engines, logging and agricultural equipment.

EAOM



### Motorcycle Oil Filters (EAOM)

Most efficient filters available for the motorcycle and powersports market. Provide excellent 99 percent filtering efficiency at 20 microns. Available in black or chrome (as available).



## DOMINATOR® Synthetic Racing Grease (GRG)

High-performance bearing and chassis lubrication for all race applications on snow, dirt, water and track. Designed for bearings that operate under high-speed, high-heat conditions.

*Use in applications that require NLGI No. 2, GC/LB*

## Synthetic Polymeric Off-Road Grease

Extreme-pressure, moly-fortified grease that provides outstanding protection for heavy-load-bearing applications, including steering knuckles, spring shackles, heavy equipment pivot joints and other components operating in high-load, low-speed conditions.

**NLGI No. 1 (GPOR1)**

**NLGI No. 2 (GPOR2)**



## Synthetic Polymeric Truck, Chassis and Equipment Grease

Delivers excellent wear protection and performance in severe-service, extreme-pressure environments such as axle assemblies, U-joints, pivot pins, fifth-wheel plates, steering linkages, kingpins, water pump bearings, ball joints and other greasable bearings and chassis components.

**NLGI No. 1 (GPTR1)**

**NLGI No. 2 (GPTR2)**

## Synthetic Multi-Purpose Grease (GLC)

Delivers premium wear protection for bearings, bushings, chassis lubrication and other applications.

*Use in applications that require NLGI No. 2, GC/LB*

## Synthetic Water-Resistant Grease (GWR)

Provides outstanding water-washout and spray-off resistance for applications frequently exposed to water, mud, snow or ice.

*Use in applications that require NLGI No. 2, GC/LB*



## X-Treme Synthetic Food Grade Grease (GXC)

Designed for high levels of protection in food and pharmaceutical industry equipment. NSF-approved formula (formerly USDA H-1) for incidental contact with food.

*Use in applications that require NLGI No. 2*





GSP



### Spray Grease (GSP)

Applies quickly and evenly and is ideal for greasing hard-to-reach equipment, including hinges, springs, industrial chains, latches, slides, winches and other common applications.

### Synthetic High Viscosity Lithium Complex Grease (GVC)

Excellent for use in heavy-duty industrial and off-road applications where equipment is working under adverse conditions, such as exposure to environmental elements, slow, heavily-loaded applications and shock-loading conditions.

*Use in applications that require NLGI #2*

### ● Semi-Synthetic Bar and Chain Oil (ABC)

Delivers excellent lubrication and protection, helping extend the life of bar and chain applications.

### Synthetic Compressor Oil

Superior protection for rotary screw, rotary vane, reciprocating and other compressor applications.

**ISO 32, SAE 10W (PCH)**  
**ISO 46, SAE 20 (PCI)**

**ISO 68, SAE 30 (PCJ)**  
**ISO 100, SAE 30/40 (PCK)**

### SIROCCO® Synthetic Compressor Oil (SEI)

Recommended as a direct replacement for PAG compressor oils such as Sullube\* and Ingersol Rand SSR Ultra Coolant\*.

*Use in applications that require ISO 32/46*

### Synthetic Anti-Wear Hydraulic Oil

Offers superior protection for hard-working hydraulic systems from the stress of high-pressure, high-load and heavy-duty operations.

**ISO 22 (AWG)**  
**ISO 32 (AWH)**  
**ISO 46 (AWI)**

### Synthetic Multi-Viscosity Hydraulic Oil

Cost-effective formulation that provides all-season protection and reliable operation in most types of hydraulic systems.

**ISO 22 (HVG)**  
**ISO 32 (HVH)**  
**ISO 46 (HVI)**  
**ISO 68 (HVJ)**

GVC



ABC



PCI



SEI



HVI



AWI



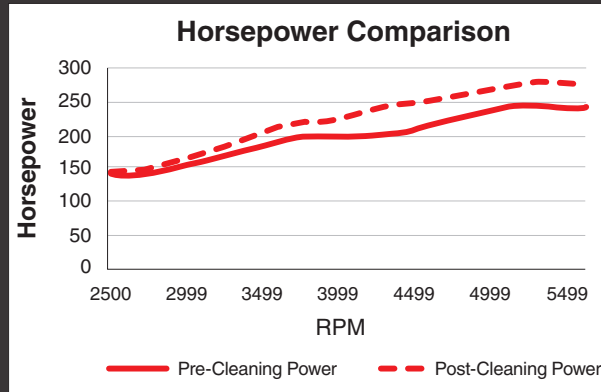
**INDUSTRY'S  
MOST ADVANCED**  
Formulation Improves  
Fuel Economy



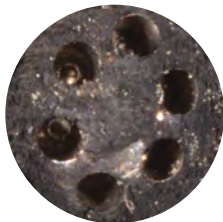
**P.i.® (API)**

Restores up to 14 percent horsepower.<sup>NN</sup>  
Bottle compatible with capless fuel systems.  
Add entire bottle to tank at fill-up.

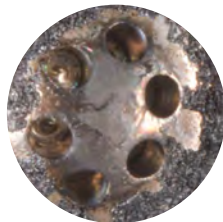
**AMSOIL Restores Horsepower**  
AMSOIL P.i.® restores up to 14% horsepower.<sup>NN</sup>



<sup>NN</sup>Based on third-party testing in a 2016 Chevrolet® Silverado® 1500, 5.3L V-8 GDI with 100,616 miles, using one tank treated with AMSOIL P.i. Actual results may vary. All trademarked names and images are the property of their respective owners and may be registered marks in some countries. No affiliation or endorsement claim, express or implied, is made by their use.



**Injector before  
P.i. treatment.**



**Injector after one  
P.i. treatment.**



**Cylinder head  
before P.i. treatment.**



**Cylinder head  
after one P.i.  
treatment.**



Addresses Ethanol-Related  
Performance Issues

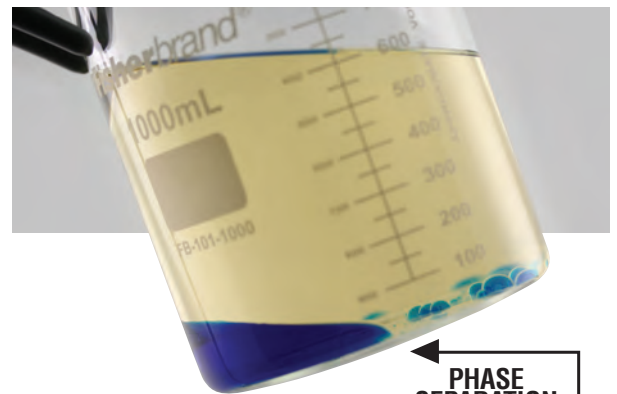
**Quickshot® (AQS)**

Effectively addresses performance issues related to ethanol, water and dirty pump gas in two- and four-stroke gasoline-powered engines and powersports equipment fuel systems, restoring peak performance.

- Motorcycles • Snowmobiles • Boats • ATVs • Edgers • Tillers
- Mowers • Snowblowers • Chainsaws • Generators • Farm & Construction Equipment • and more

Phase separation is when ethanol/water mixtures fall to the bottom of fuel tanks and containers, leading to lean-burn conditions.

Quickshot helps keep water molecules dispersed to prevent phase separation.



**PHASE  
SEPARATION**  
Water dyed blue

**DIRECTIONS:**  
One bottle treats up to 6 gallons (23 litres) for cleanup and up to 12 gallons (45 litres) for continued protection. For best results use with every tank.

Degraded fuel can present a major maintenance issue in motorcycle engines, forming varnish, gum and insoluble debris that clog carburetors, fuel injectors and fuel filters. Carbon buildup can form on the tops of pistons resulting in pre-ignition, rough idling and poor throttle response. Fuel-related problems are only expected to intensify in the coming years as the ethanol content in pump gasoline continues to increase.

AMSOIL Quickshot (AQS) is a premium fuel additive formulated to thoroughly clean and restore peak performance in motorcycle and powersports equipment fuel systems. It also stabilizes fuel between uses and during short-term storage periods.





### Upper Cylinder Lubricant Gasoline Additive (UCL)

Lubricates fuel system and upper cylinders. Fights ethanol-related corrosion. Helps keep injectors clean. Bottle compatible with capless fuel systems. Use entire bottle at every fill-up.

### Gasoline Stabilizer (AST)

Helps prevent the formation of varnish and sludge in stored seasonal equipment such as snowmobiles, lawnmowers, motorcycles and boats. One ounce (60 ml) treats 2.5 gallons (9.46 litres) of fuel.

### Engine Fogging Oil (FOG)

Helps prevent corrosion and dry starts to internal engine components found in outboard motors, lawn and garden equipment, motorcycles, snowmobiles, ATVs, motor homes and generators during storage or long periods of inactivity.

### DOMINATOR® Octane Boost (AOB)

Improves the performance of all two- and four-stroke gasoline-fueled engines. Treats up to 15 gallons (57 litres) of gasoline.

### Motorcycle Octane Boost (MOB)

Increases octane up to three numbers for maximum power and efficiency in motorcycles. Treats 4-6 gallons (15-23 litres) of gasoline.

### Diesel Injector Clean (ADF)

Targets traditional nozzle deposits, combustion chamber deposits and internal diesel injector deposits found in HPCR injectors. Lubricates to reduce fuel pump and injector wear. Concentrated for rapid results, maximum horsepower and up to 8 percent increased fuel economy in engines with accumulated deposits. One ounce (30 ml) treats up to 5 gallons (18.93 L) of fuel.

### Diesel Cold Flow (ADD)

Effectively modifies wax crystal formation at low temperatures to depress diesel fuel pour point, prevent wax settling and improve cold-flow filtration properties. Lowers cold filter-plugging point (CFPP) by up to 40°F (22°C) in ultra-low-sulfur diesel fuel (ULSD). One ounce (30 ml) treats up to 5 gallons (18.93 L) of fuel.

### Diesel Injector Clean + Cetane Boost (ADS)

Combines the superior deposit-removing properties of Diesel Injector Clean with the cetane-boosting benefits of Diesel Cetane Boost in one convenient package. One ounce (30 ml) treats up to 5 gallons (18.93 L) of fuel.

### Diesel All-In-One (ADB)

Combines the superior deposit-removing properties of Diesel Injector Clean, the excellent anti-gelling properties of Diesel Cold Flow and the cetane-boosting benefits of Diesel Cetane Boost in one convenient package. One ounce (30 ml) treats up to 2.5 gallons (9.46 L) of fuel.

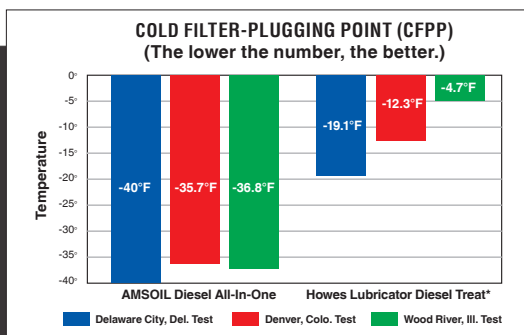
### Diesel Cetane Boost (ACB)

Raises the cetane number of diesel fuel up to eight points for maximum horsepower, increased fuel economy and easier starts in all diesel engines. Diesel engines operate best on fuel with cetane values of 50 or higher. Most diesel fuel sold in North America has a cetane value of 40-45. One ounce (30 ml) treats up to 10 gallons (37.85 L) of fuel.

*Five-gallon pails and 55-gallon drums are filled to 98 percent of packaging capacity to allow for product expansion in warm temperatures.*



**BETTER THAN HOWES\***  
Type "AMSOIL: All in One Diesel" at [youtube.com](http://youtube.com) to check out the details.



### Superior Cold-Temperature Protection

Provides as much as **32°F better protection** against cold-temperature gelling than Howes Lubricator Diesel Treat.<sup>M</sup> Plus raises cetane up to 4 points.

<sup>M</sup>Based on independent testing in July 2017 of AMSOIL Diesel All-In-One and Howes Lubricator Diesel Treat using diesel fuel representative of the U.S. marketplace and Howes' recommended treat ratio for above 0°F.



DRC

### Diesel Recovery (DRC)

Emergency diesel fuel treatment that liquefies gelled diesel fuel and thaws frozen fuel filters. Keep a bottle on hand for emergencies. One ounce (30 ml) treats up to 1 gallon (3.79 L) of fuel.



ADG

### Power Foam® (APF)

Improves starting and performance by cleaning dirty intake systems and spark plugs, freeing sticky valves and removing gum, varnish and carbon deposits.



APF

### Heavy-Duty Degreaser (ADG)

Formulated with powerful and fast-acting solvents, attacking petroleum-based grime on a molecular level to loosen its hold on metal, concrete and other surfaces.



AMS

### Silicone Spray (ALS)

Perfect for lubricating or protecting rubber, nylon, plastics, upholstery, vinyl, wood, cardboard or fiberglass. Also excellent for waterproofing leather products. Hundreds of household uses.



ALS

### Mudslinger® (AMS)

Provides a protective layer of armor against the accumulation of mud, dirt and snow on ATVs, UTVs and dirt bikes, easing clean-up.

### Engine Degreaser (AED)

Effectively cleans engine surfaces by cutting through grease, oil and grime.



AED



BEFORE Engine Degreaser



AFTER Engine Degreaser



AMP

### Glass Cleaner (AGC)

Cuts through grease and grime faster than other leading glass cleaners, stays where you spray it and leaves no streaks.



AGC

### Metal Protector (AMP)

Displaces water, penetrates, lubricates and protects metal surfaces from corrosion, including hinges, squeaky mechanical objects, electrical systems and more.



AMH

### Heavy-Duty Metal Protector (AMH)

Penetrates and adheres to metal surfaces, leaving a long-lasting coating that protects against the damaging effects of salt, moisture or chemical corrosion.

### Synthetic Air Tool Oil (AIR)

Effectively lubricates rotary and piston-type air-tool bearings and motors, while managing moisture and conditioning rubber and plastic seals and O-rings.



AIR

### Chain Lube (ACL)

Provides outstanding protection against wear and corrosion. Helps extend chain life. Does not attract dirt and does not fling off. Fast-drying.



ACL





### Engine and Transmission Flush (FLSH)

Helps restore operating efficiency, increase fuel economy and reduce emissions in gasoline and diesel engines and automatic transmissions.

### DOMINATOR® Coolant Boost (RDCEB)

Helps reduce engine temperatures, increase horsepower, promote faster engine warm-up times and reduce radiator and engine corrosion in racing and passenger vehicles.



### Propylene Glycol Antifreeze & Coolant (ANT)

Combines the benefits of biodegradability, low toxicity and all-weather protection for up to 150,000 miles (241,402 km) or 5 years, whichever comes first, in passenger cars and light trucks. Protection up to 1,000,000 miles (1,609,344 km), 20,000 hours or 8 years, whichever comes first, in heavy-duty applications. Concentrated formula.

*Use in applications that require ASTM D3306, D6210, D7583, D7820 • TMC RP329B, TMC RP338 • AS/NZS 2108.2004 Type A Suitable for use with Case New Holland • Cummins 14603 • Cummins 3666132 • DDC 7SE 298, 93K217 • Freightliner 48-22880 • GM Heavy Truck • International Truck and Engine / Navistar CEMS B-1 Type III-A • JIS K2234 • MAN 324 NF • MB DBL 7700 • MTU MTL 5048 • Kenworth RQ26-170-97 • Mack 014GS17004, 014GS17009 • PACCAR CS0185 • DAF MAT 74002 • Peterbilt 8502.002 • Scania TB1451 • Volvo Heavy Truck*

### Passenger Car/Light Truck Antifreeze & Coolant (ANTPC)

Engineered to exceed original equipment manufacturer (OEM) requirements for up to 150,000 miles (241,402 km) or 5 years, whichever comes first, in passenger cars and light trucks. Pre-mixed formula.

*Formulated for use in ALL domestic and import passenger cars and light trucks. Engineered to meet original equipment manufacturer (OEM) specifications GM 6277; JIS K2234; VW TL 774D; Ford WSS-M97B44-D and ASTM D3306 requirements.*

### Powersports Antifreeze & Coolant (PSAF)

Advanced design helps control operating temperature in hot-running, high-revving powersports applications. Extended-life formula provides all-season protection for up to five years.



### AMSOIL Resists Corrosion ●●

In independent, industry-standard testing, cast-iron and copper plates protected by AMSOIL showed virtually **no signs of corrosion**.<sup>HH</sup>

<sup>HH</sup>Based on results of the ASTM D2570 corrosion test.



### AMSOIL Resists Cavitation ●

In independent, industry-standard testing, cylinder liners protected by AMSOIL showed virtually **no signs of cavitation**.<sup>II</sup>

<sup>II</sup>Based on results of the ASTM D7583 cavitation test.



### Heavy-Duty Antifreeze & Coolant (ANTHD)

Provides superior heat transfer and excellent protection against corrosion, cylinder-liner cavitation, freezing and boilover. Protection up to 1,000,000 miles (1,609,344 km), 20,000 hours or 8 years, whichever comes first. Pre-mixed formula.

*Use in applications that require ASTM D3306, D6210, D7583, D7820 • TMC RP329B, TMC RP338 • AS/NZS 2108.2004 Type A Suitable for use with Case New Holland • Cummins 14603 • Cummins 3666132 • DDC 7SE 298, 93K217 • Freightliner 48-22880 • GM Heavy Truck • International Truck and Engine / Navistar CEMS B-1 Type III-A • JIS K2234 • MAN 324 NF • MB DBL 7700 • MTU MTL 5048 • Kenworth RQ26-170-97 • Mack 014GS17004, 014GS17009 • PACCAR CS0185 • DAF MAT 74002 • Peterbilt 8502.002 • Scania TB1451 • Volvo Heavy Truck*





### Synthetic Firearm Lubricant and Protectant (FLPBA, FLPSC)

Effectively lubricates and protects firearms, helping extend life and prevent blockage, jams and wear. Outstanding protection and performance in both hot and cold climates. Specifically formulated for firearms, offering superior performance over multi-purpose products.

### Firearm Cleaner and Protectant (FCPSC, FCPCN)

Penetrates deep into hard-to-reach components, effectively cleaning fouling and powder residue from all firearm surfaces, safely protecting them for storage, reducing jamming and increasing reliability. Protects against corrosion, allowing for safe storage and preserving performance, reliability and value.



### DOT 3 & 4 Synthetic Brake Fluid (BFLV)

High-performance brake fluid specially designed as a multi-use product for passenger-car, light-truck and powersports applications.

*Use in equipment that requires a DOT 3, 4 or 5.1 brake fluid.*

### DOMINATOR® DOT 4 Synthetic Racing Brake Fluid (BFR)

High boiling point brake fluid engineered to resist brake fade and vapor lock during intense racing applications.

*Use in racing equipment that requires a DOT 4 brake fluid.*



### Brake and Parts Cleaner (BPC)

Professional-strength parts cleaner that quickly removes oil, grease, brake fluid and other contaminants from brake parts and other automotive components.

### Multi-Vehicle Synthetic Power Steering Fluid (PSF)

Provides excellent wear protection, long component life and quiet operation in most passenger cars and light trucks.

*Use in applications that require American Motor Corporation C 4124; 4634 • BMW 82 11 0 148 132; 83 29 0 429 576; 81 22 1 468 879 & 82 11 1 468 041 • Chrysler MS-1872; MS-5931, MS-9602 & MS-11655 • Ford M2C138-CJ; ESW-M2C128-C&D; M2C195-A; M2C204-A & M2C33-F • GM/Saginaw PSF 9985010; 9985835; 89021184 & 1050017 • Hyundai/Kia PSF-3; PSF-4 & PSF 00232-19017 • Mercedes Benz 236.3; 345.0; 001 989 24 03 10; 001 989 24 03 12 & Q 1 32 0001 • Mitsubishi Diamond SP III & PS Fluid • Navistar TMS 6810 • Nissan PSF-II • Porsche 000 043 206 56 • Saab 93160548; (45) 30 09 800 & 30 32 380 • Subaru K0209A0080 • Toyota PSF Type EH; P/N 008886-01 • Volvo 1161529 & 30741424 • VW/Audi TL-52146; G002000; G 004 000 M2; G 004 000 M7 & G 004 000 M8*



### Miracle Wash® Waterless Wash & Wax (AMW)

Unique dry car wash and polish delivers outstanding performance and quick, easy and economical application. No water required.

### Fluid Extraction Pump (G2576)

Aids in the removal of power steering fluid, motor oil, drivetrain lubricants and engine coolant. Can also be used to install fresh lubricants in hard-to-reach areas.





## Aftermarket Partners

AMSOIL also offers premium filtration products from its aftermarket partners, including Donaldson, WIX and MANN FILTER.

For product and pricing information, call 1-800-956-5695 (Monday - Friday, 7 a.m. - 7 p.m. Central Time) or contact the AMSOIL Dealer listed on the back of your catalog (if one is listed).



Contact your local full-service AMSOIL Dealer for more information on AMSOIL products or to place an order. You may also order direct by calling AMSOIL INC. at 1-800-956-5695 and providing the referral number listed here. ▼

Referral # **779**

**Greg Vaughn**  
**Vaughn Enterprises, Inc.**

AMSOIL Direct Jobber

[Greg@VaughnInc.com](mailto:Greg@VaughnInc.com)

[www.VaughnInc.com](http://www.VaughnInc.com)

Toll Free: **1-800-581-5823**

Office: 920-733-2753

Fax: 920-734-5823